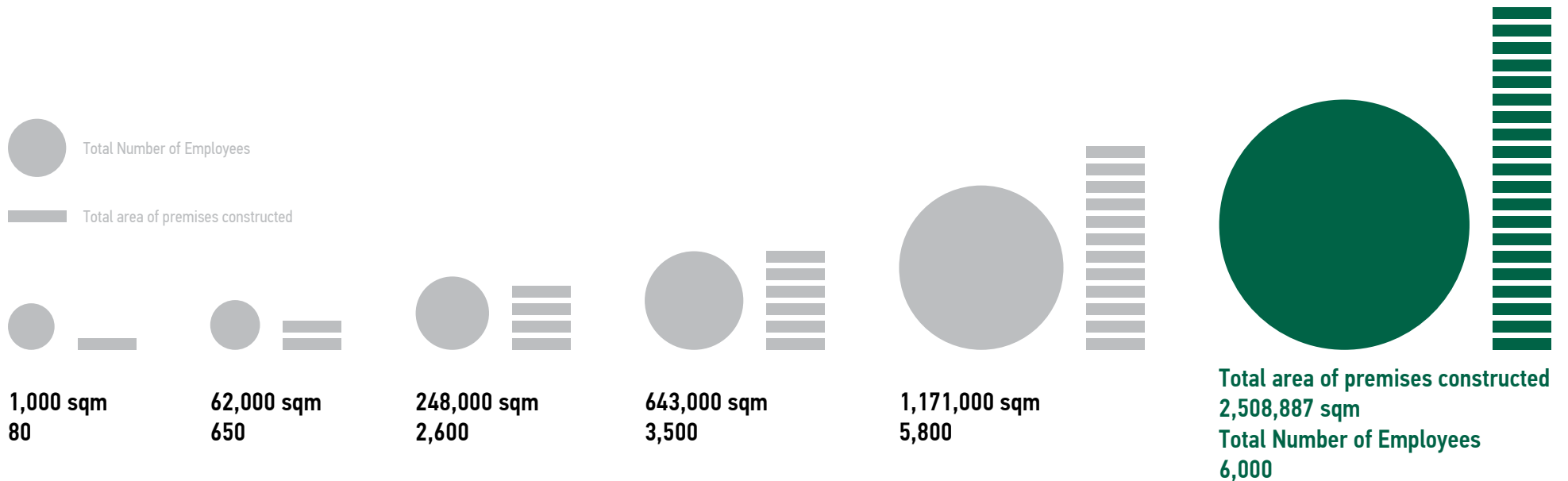


АТОМСТРОЙКОМПЛЕКС

COMPANY HISTORY

Atomstroykompleks is the largest vertically integrated construction holding in the Urals.



Year	Key Events
1996	1995-1996 «Atomstroykompleks» corporation was established on March 2, 1995. The company was one of the first to make use of state-of-the-art construction technologies.
1998	1997-1999 The company established its own design bureau. Liebherr concrete plant commissioned. The company starts using Peri Formwork technology.
2000	1999-2001 The «Territoriya» property management company was established. The company introduced a new product to the housing market: the option of individually tailored apartment floor plans.
2002	2001-2003 Firs tarmac factory was commissioned. Large-scale formwork workshop was opened. Comprehensive construction automation system was introduced.
2004	2003-2006 The company began to construct the first high-rise housing buildings in Yekaterinburg. Hot concrete and twin-block factories was built. Exterior finishing of the Church on the Blood was completed.
2006	2006-2009 A hotel was built for the Park Inn international hotel chain. A high-quality silicate brick production plant "SiMat" was commissioned. Pavement slab production was started.
2008	2009-2014 A new production line was commissioned at the Sysert Lime factory to produce industrial lime. The Sevastyanov's House reconstruction project was completed. The Bogdanovich Insulation Materials Plant was commissioned.
2010	
2013	
2015	2014-2015 Apartments introduced as a new layout for the housing market. For two years consecutively a record number of square meters of housing were commissioned - almost a quarter of the total volume of new-build housing in Yekaterinburg. New social facilities, including pre-school and medical institutions, as well as heritage properties were commissioned.

COMPANY MANAGEMENT



VALERIY ANANYEV

Director General

Honoured Builder of
Russia

35 years experience

The Ural Polytechnic
Institute (USTU-UPI)

Civil Engineer



PAVEL KUZNETSOV

General Engineer

Honoured Builder of
Russia

30 years in the industry

The Ural Polytechnic
Institute (USTU-UPI)

Civil Engineer



OLEG MINKIN

Executive Director

Honoured Builder of
Russia

40 years in the industry

The Ural Polytechnic
Institute (USTU-UPI)

Civil Engineer



ALEXEY GVERZHIS

Director

General Contractor
“Centre Podriadov”

Honoured Builder of
Russia

34 years in the industry

The Ural Polytechnic
Institute (USTU-UPI)

Civil Engineer



ANDREY BATURIN

Financial Officer

20 years in the industry

The Ural Polytechnic
Institute (USTU-UPI)

Engineer

BUSINESS MODEL

PRODUCTION

Construction materials production – granite quarries, a concrete factory and tarmac factory, a limestone deposit and a lime production plant, facilities producing metal structures, brick facings, walling blocks, a transparent structure production facility, and timber processing.

DEVELOPMENT

Scouting and assessment of investment projects, land plot acquisition. Project structuring, funding organisation. Development of architectural concepts, design. Obtaining requirements specifications, connection of services. Project approvals coordination and expert assessment.

CONSTRUCTION

Geodesic and foundation works. Construction of key building structures, roofing, facades. Building engineering and vertical transportation systems installation. Tailor-made interiors. Landscaping and road construction, etc.

SALES

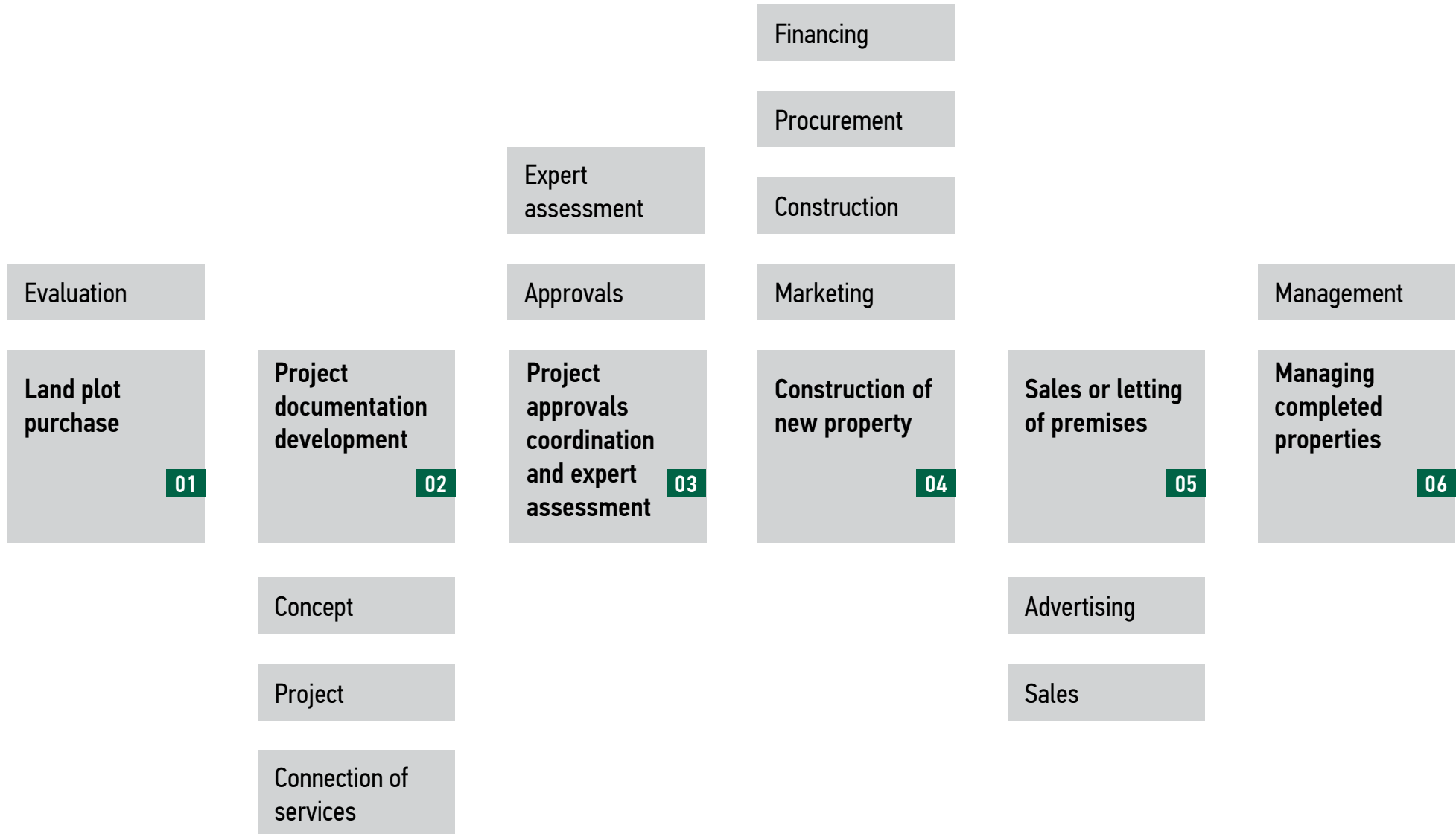
A real estate agency – project marketing strategy development, marketing campaigns, the establishment of contact centres and sales offices. Project presentations, individual design, and customer support. Preparing and completion of sale transactions.

Real estate and property MANAGEMENT

Management, maintenance and repairs to building structures and engineering systems, cleaning and landscaping of surrounding areas. Organisation, registration and support of housing owners associations. Tailor-made services to meet owners' individual requirements.

DIRECTOR GENERAL

The company's fine-tuned business processes enable the implementation of projects in the shortest possible time.



PRODUCTION ASSETS



000 «Crushing and Screening Plant»

Granite quarries in Shartash and Abramovo, Nordberg crushing complex.



000 «BETON Express»

Liebherr concrete plant and Amman tarmac plant. Polarmatic hot concrete production.



000 «Isvest Siserty»

Limestone deposit and Terruzzi-Fercalx lime production plant.



000 «Berit Plant»

Production of metal structures and landscaping elements



000 «Kamensk-Uralsky Construction Materials Factory»

Production of calcium silicate facing bricks.



000 «Teplit»

Wehrhahn aerated concrete wall blocks production line.



000 «Atomprofi+»

Design, production, and installation of transparent structures and ventilated facades.



000 «BZMP»

Basalt insulation materials production facility.



000 «BiKdrev»

Production of doors and windows, furniture.



000 «Technology»

Production of PERI formwork for cast-in-place concrete construction.

PRODUCTION ASSETS



000 «CRUSHING AND SCREENING PLANT»

PRODUCT

Gravel

PRODUCTION

Extraction of granite at Shartash and Abramovo sites, crushing and production of gravel.

EQUIPMENT

Two mobile crushing and screening complexes Nordberg NW-110, GP-200 CS (Finland).

CAPACITY

Gravel - 840,000 cubic metres per year

ESTABLISHED

2004

LOCATION

Yekaterinburg



www.atomsk.ru

PRODUCTION ASSETS



ООО «BETON EXPRESS»

PRODUCTS

Concrete, tarmac

PRODUCTION

Cement mortar production with the use of a broad range of chemical additives (plasticising, water repellent, frost protection, silicon dioxide, set/harden retarders etc.)

EQUIPMENT

Liebherr concrete plant, capacity 300 cubic metres of concrete per hour.

CAPACITY

Concrete – 500,000 cubic metres per year

Tarmac – 300,000 cubic metres per year

ESTABLISHED

2004

LOCATION

Yekaterinburg



www.beton-express.ru

PRODUCTION ASSETS



000 «ISVEST SISERTY»

PRODUCT

Lime

PRODUCTION

Limestone extraction at Sosnovskoye deposit, baking and production of lime. High content of the key component CaO at 85-92%.

EQUIPMENT

Two lime kilns at Terruzzi-Fercalx, capacity – 200 tons per 24 hours each.

CAPACITY

Lime - 120,000 tons per year

ESTABLISHED

2006

LOCATION

Sysert



www.iz-s.ru

PRODUCTION ASSETS



000 «BERIT PLANT»

PRODUCTS

Landscaping elements

PRODUCTION

Production of pavement slabs, road and pavement kerb stones, vent blocks, reinforced concrete pipes and well elements, broad range of reinforcement elements and reinforced concrete leave-in-place formwork.

CAPACITY

Pavement tiles – 730,000 cubic metres per year

Leave-in-place formwork – 365,000 cubic metres per year

Reinforced concrete rings – 12,000 pieces per year

Rebar elements – 21,900 tons per year

ESTABLISHED

2004

LOCATION

Yekaterinburg

СТРОИТЕЛЬНЫЕ МАТЕРИАЛЫ
БЕРИТ
ЗАВОД

www.berit.ru

PRODUCTION ASSETS



ООО «KAMENSK-URALSKY CONSTRUCTION MATERIALS FACTORY»

PRODUCT

Calcium silicate bricks.

PRODUCTION

Mixing of quartz sand and lime, hydration of the mix, pressing into moulds, and curing.

EQUIPMENT

German presses, Lasco KSP-801. Vollert, Eirich, BHS, HOKA, and Sander production lines.

CAPACITY

Calcium silicate bricks - 45,000,000 pieces per year

ESTABLISHED

2005

LOCATION

Kamensk-Uralsky

ООО «КАМЕНСК-УРАЛЬСКИЙ
ЗАВОД СТРОИТЕЛЬНЫХ МАТЕРИАЛОВ»
Si Mat www.simat.ru

PRODUCTION ASSETS



ООО «TEPLIT PRODUCTION AND CONSTRUCTION UNION»

PRODUCT

Concrete blocks

PRODUCTION

Moulding and cutting aerated concrete blocks, autoclave steam curing. Production of “Twinblock” marked unreinforced cellular concrete blocks.

EQUIPMENT

Wehrhahn Automated production line.

CAPACITY

Concrete blocks – -540,000 cubic metres per year

ESTABLISHED

2004

LOCATION

Beryozovsky



www.teplit.ru

PRODUCTION ASSETS



000 «ATOMPROFI+»

PRODUCT

Transparent structures

PRODUCTION

Design, production and installation of transparent and enclosing structures, window and door blocks.

CAPACITY

Transparent structures – 60,000 square metres per year

Aluminium structures – 48,000 square metres per year

ESTABLISHED

2000

LOCATION

Yekaterinburg

АТОМПРОФИ+ www.atomprofi.ru

PRODUCTION ASSETS



ООО «БОГДАНОВИЧ РОК ВУЛ СЛАБ FACTORY»

PRODUCT

Rock wool

PRODUCTION

Development of basalt deposits, production, design and installation of insulation materials.

EQUIPMENT

Italian processing line Gamma Meccanica.

CAPACITY

Rock wool fibre 36,000 tons per year

ESTABLISHED

2012

LOCATION

Bogdanovich



www.minplita-izba.ru

BUILDING ENERGY EFFICIENCY



SINGLE HOUSE ENCLOSURE

1. Exterior walls are built with Twinblock (material of own production).

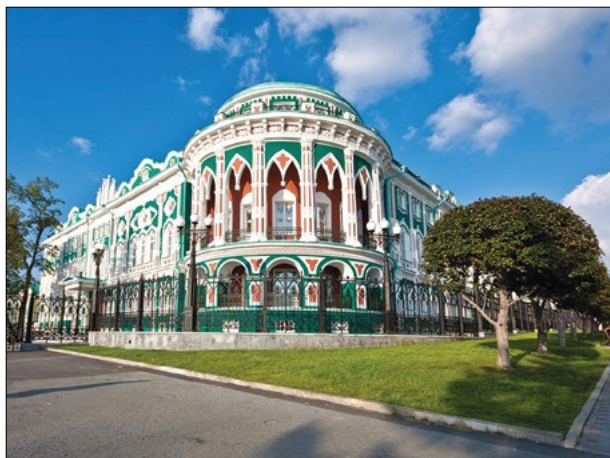
The construction of exterior walls allows to keep the heat inside the structure (building) for a long time even in case of emergency heat outage.

2. Triple –pane multiple glass unit with 70 mm thick.

SYSTEMS FOR THE HOT WATER SUPPLY, HEATING AND VENTILATION

1. Closed-loop heating system for each house. Installation of individual heat points (IHP) together with heat exchangers in the heating system, hot water supply and ventilation.
2. IHP is provided with a temperature sensor that allows adjusting of the parameters of the coolant depending on the outside temperature.
3. Horizontal cabling system of DHW and single-storey heating system ensures an even distribution of heat in the house.
4. The DHW system is designed as a horizontal scheme with a constant circulation over of the central standpipe. This allows the water not to stagnate and saves on the additional heating.
5. Individual radiators adjustment system allows to create a comfortable environment in every separate room.
6. Plenum fresh air valves allow dosing of fresh air in the rooms, to minimize opening of windows
7. Individual records for each apartment of cold-water system, hot water, electricity, heating with a single point of control.

SIGNIFICANT PROJECTS



HOUSE OF MERCHANT SEVASTIANOV



SPASO-PREOBRAZHENSKY CATHEDRAL



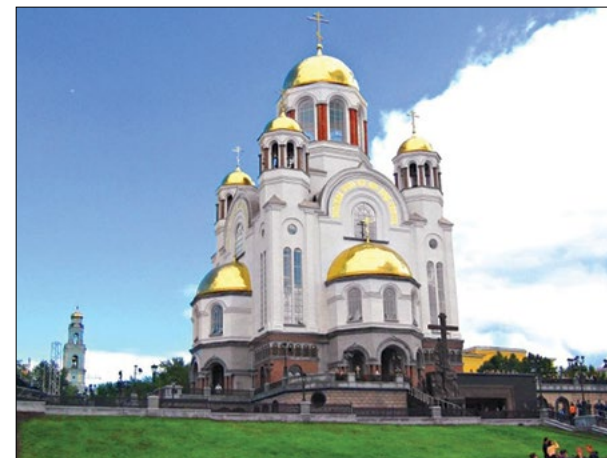
YOUNG SPECTATOR'S THEATRE



CHAMBER THEATR



**TEACHING AND REHEARSAL CENTRE THEATRE
BALLET «THE NUTCRACKER»**



**MEMORIAL CHURCH ON BLOOD IN HONOR
OF ALL SAINTS RESPLENDENT
IN THE RUSSIAN LAND**

SIGNIFICANT PROJECTS



TB DISPENSARY



REGIONAL PERINATAL CENTER CSTO № 1



DIAGNOSTIC & TREATMENT COMPLEX



DISASTER MEDICINE AND EMERGENCY SITUATIONS CENTRE



GYMNASIUM №9



EYE MICROSURGERY CENTRE

SIGNIFICANT PROJECTS



PALACE OF JUSTICE



**THE ARBITRATION COURT
OF SVERDLOVSK REGION**



**THE LEGISLATIVE ASSEMBLY
OF SVERDLOVSK REGION**

SIGNIFICANT PROJECTS



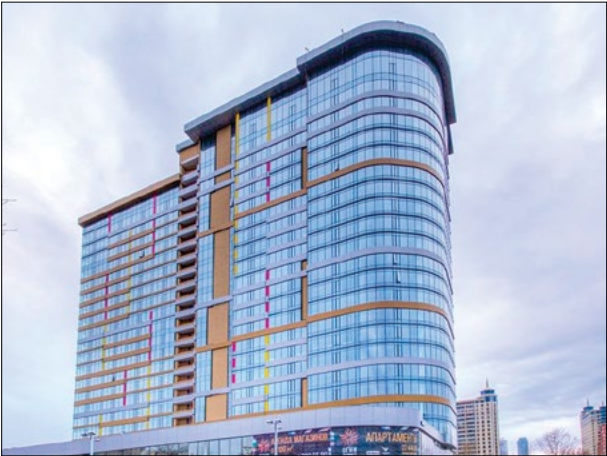
THE HEAD OFFICE «ATOMSTROYKOMPLEKS»



HOTEL PARK INN YEKATERINBURG



TINKOFF BREWERY



APARTMENT COMPLEX «OGNY YEKATERINBURG»



AUTOCENTRE «AUTOBAHN»

REAL ESTATE



RESIDENTIAL QUARTER «MOSCOW»



**RESIDENTIAL COMPLEX OF «DE LUXE»
«THE FEBRUARY REVOLUTION»**



**RESIDENTIAL COMPLEX
ON THE URAL - SOVIET STREET**



RESIDENTIAL COMPLEX «SUNNY ISLAND»



RESIDENTIAL COMPLEX «DE'GENNIN»



RESIDENTIAL COMPLEX «AQUAMARINE»

ПРИМЕРЫ СОБСТВЕННОГО СТРОИТЕЛЬСТВА (ОБЪЕКТЫ КОМФОРТ И ЭКОНОМ-КЛАССА)



**RESIDENTIAL HOMES
ON THE ORDER-BEARERS STREET**



RESIDENTIAL QUARTER «KHRUSTALNOGORKY»



**RESIDENTIAL COMPLEX
ON THE MURANOVA STREET**



MICRODISTRICT «FIR»



**RESIDENTIAL QUARTER ON THE
VONSOVSKOGO-MEKHRENEVA STREET**



RESIDENTIAL QUARTER «RADUZHNIY»

**39, BELINSKOGO ST., 620075,
YEKATERINBURG, RUSSIA,
TEL.: +7 (343) 266-93-01
E: MAIL@ATOMSK.RU
S: WWW.ATOMSK.RU**